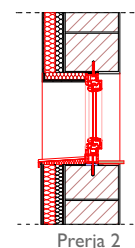
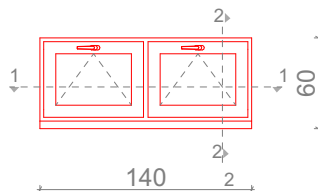
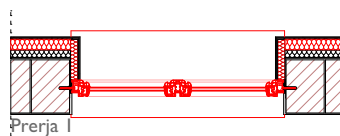




## DRITARET E JASHTME TË REJA



## DUKJA



<b>Pos. W-28</b>	<i>Specifikimi Teknik, Dimensionet, Standardet e kerkuara</i>		
Dimensionet:	140 / 60 cm	Ngjyra :	Bardhe / RAL 9003
Sasia :	1 copë	Standardet :	DIN EN ISO 9001
Materiali :	PVC	Qelqi :	4(Katër Stinor)+16+4Low E
Korniza:	Gjerësia≥85mm	U-Value (dritare) : $U_w \leq 1.2 \text{ W/m}^2\text{K}$	
Izolimi akustik :	EN 14351, EN 717/ $R_w=42\text{dB}$		

Emri i Projektit:		Përpjesa	Nr.i vizatimit	Vula
Consulting Company for Development of detailed energy audit reports, Detailed Designs, Technical Specification		1:50	A.51	
Financuar nga:	Projekti Kryesor	Arkitektura	Vizatuar nga:	Kontrolluar nga:
 <b>FKEE</b> <small>FOND I KOSOVES PER EFICIENCË TE ENERJESHE KOSOVSKI FOND ZA ENERGETSKU EFISASNOST KOSOVO ENERGY EFFICIENCY FUND</small>	Emri i objektit:	Shkolla Teknike" Skender Luarasi" Suhareke	Vendi:	Data :
Projektuar nga:  <b>ALB-ARCHITECT</b> <small>DESIGN CONSTRUCTION PROJECT MANAGEMENT TECHNICAL CONSULTING</small>	Titulli i vizatimit	Skemat e dritareve W-28	Formati i fletës:	Nënskrimi
<small>Bregu "Isa Kastrioti" 76A, Prishtinë   tel.045 018 7200 9773   alb.architect@gmail.com   www.albarchitect.com</small>		A4		